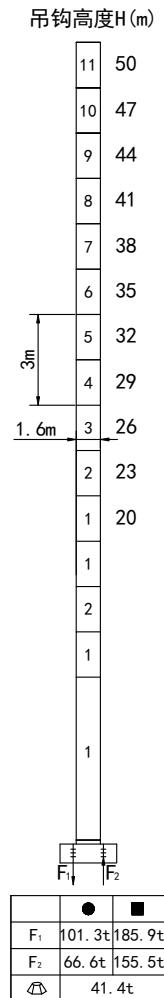
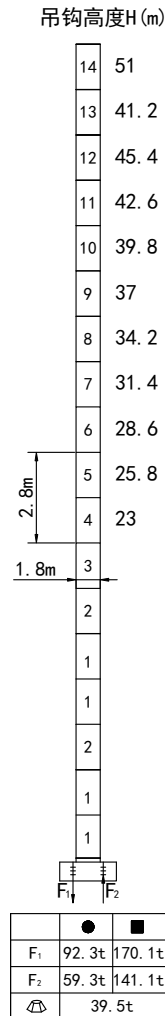
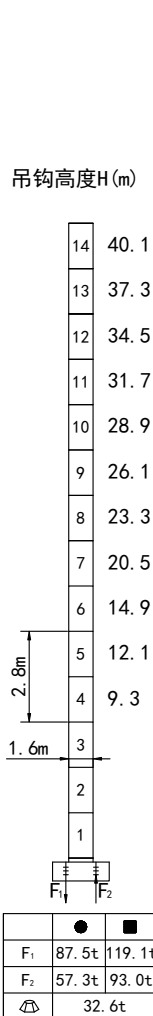
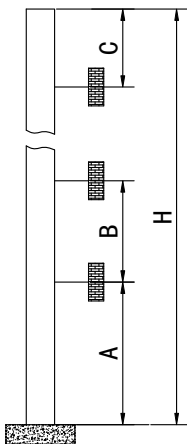


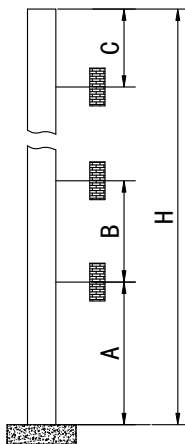
塔身截面 Masts



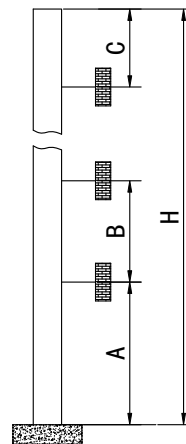
附着位置及塔机高度 Anchorage



Mast	A	B	C _{max}	H
1.6m	32.23m	25.2m	35.7m	202.3m >202.3m*



Mast	A	B	C _{max}	H
1.8m	43.44m	30.8m	41.42m	205m >205m*


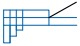



Mast	A	B	C _{max}	H
1.6m	42.15m	24m	38.62m	201m >201m*

机构 Mechanisms

名称	机构代号	工作速度 (m/min)	起重量 (t)	容绳量 (m)	电机额定功率 (Kw)	
起升6t Hoisting	QSW60A	双绳 2 fall	0-40	3.0	420	26
			0-80	1.5		
		四绳 4 fall	0-20	6.0	>420*	
			0-40	3.0		
起升8t* Hoisting	QSW80A	双绳 2 fall	0-40	4.0	480	30
			0-80	2.0		
		四绳 4 fall	0-20	8.0	>480*	
			0-40	4.0		
变幅机构 Trolleying	QTZ5.0H	0~50			2.2	
回转机构 Slewing	JH08	0~0.7			4×2	
电源 Power	380V (±10%) /50Hz					

平衡重 Counter weight

			PHZ2850	PHZ2200	PHZ1200
60m	12.8m	17000	4	2	1
55m	12.8m	15800	4	2	0
50m	12.8m	14800	4	1	1
45m	12.8m	13600	4	1	0
40m	12.8m	12600	4	0	1
35m	12.8m	10750	3	1	0
30m	12.8m	9750	3	1	0

注：大汉科技不断创新，因此引起的实物与样本中产品外观和技术参数不符，以实物为准，如有变更不另行通知，本公司拥有对样本的最终解释权。

*：请联系大汉技术部